

# NUTS





# NUTS

## INTERNAL THREADS – CLASS 2B

Nominal Size & Threads / Inch & Series Designation		Allowance	Minor Diameter		Pitch Diameter			Major Diameter
			Min.	Max.	Min.	Max.	Tolerance	Min.
0-80	UNF	0.0005	0.0465	0.0514	0.0519	0.0542	0.0023	0.0600
1-64	UNC	0.0006	0.0561	0.0623	0.0629	0.0655	0.0026	0.0730
1-72	UNF	0.0006	0.0580	0.0635	0.0640	0.0665	0.0025	0.0730
2-56	UNC	0.0006	0.0667	0.0737	0.0744	0.0772	0.0028	0.0860
2-64	UNF	0.0006	0.0691	0.0753	0.0759	0.0786	0.0027	0.0860
3-48	UNC	0.0007	0.0764	0.0845	0.0855	0.0885	0.0030	0.0990
3-56	UNF	0.0007	0.0797	0.0865	0.0874	0.0902	0.0028	0.0990
4-40	UNC	0.0008	0.0849	0.0939	0.0958	0.0991	0.0033	0.1120
4-48	UNF	0.0007	0.0894	0.0968	0.0985	0.1016	0.0031	0.1120
5-40	UNC	0.0008	0.0979	0.1062	0.1088	0.1121	0.0033	0.1250
5-44	UNF	0.0007	0.1004	0.1079	0.1102	0.1134	0.0032	0.1250
6-32	UNC	0.0008	0.1040	0.1140	0.1177	0.1214	0.0037	0.1380
6-40	UNF	0.0008	0.1110	0.1190	0.1218	0.1252	0.0034	0.1380
8-32	UNC	0.0009	0.1300	0.1390	0.1437	0.1475	0.0038	0.1640
8-36	UNF	0.0008	0.1340	0.1420	0.1460	0.1496	0.0036	0.1640
10-24	UNC	0.0010	0.1450	0.1560	0.1629	0.1672	0.0043	0.1900
10-32	UNF	0.0009	0.1560	0.1640	0.1697	0.1736	0.0039	0.1900
12-24	UNC	0.0010	0.1710	0.1810	0.1889	0.1933	0.0044	0.2160
12-28	UNF	0.0010	0.1770	0.1860	0.1928	0.1970	0.0042	0.2160
1/4-20	UNC	0.0011	0.1960	0.2070	0.2175	0.2224	0.0049	0.2500



# NUTS

## INTERNAL THREADS – CLASS 2B

Nominal Size & Threads / Inch & Series Designation		Allowance	Minor Diameter		Pitch Diameter			Major Diameter
			Min.	Max.	Min.	Max.	Tolerance	Min.
1/4-28	UNF	0.0010	0.2110	0.2200	0.2268	0.2311	0.0043	0.2500
5/16-18	UNC	0.0012	0.2520	0.2650	0.2764	0.2817	0.0053	0.3125
5/16-24	UNF	0.0011	0.2670	0.2770	0.2854	0.2902	0.0048	0.3125
3/8-16	UNC	0.0013	0.3070	0.3210	0.3344	0.3401	0.0057	0.3750
3/8-24	UNF	0.0011	0.3300	0.3400	0.3479	0.3528	0.0049	0.3750
7/16-14	UNC	0.0014	0.3600	0.3760	0.3911	0.3972	0.0061	0.4375
7/16-20	UNF	0.0013	0.3830	0.3950	0.4050	0.4104	0.0054	0.4375
1/2-13	UNC	0.0015	0.4170	0.4340	0.4500	0.4565	0.0065	0.5000
1/2-20	UNF	0.0013	0.4460	0.4570	0.4675	0.4731	0.0056	0.5000
9/16-12	UNC	0.0016	0.4720	0.4900	0.5084	0.5152	0.0068	0.5625
9/16-18	UNF	0.0014	0.5020	0.5150	0.5264	0.5323	0.0059	0.5625
5/8-11	UNC	0.0016	0.5270	0.5460	0.5660	0.5732	0.0072	0.6250
5/8-18	UNF	0.0014	0.5650	0.5780	0.5889	0.5949	0.0060	0.6250
3/4-10	UNC	0.0018	0.6420	0.6630	0.6850	0.6927	0.0077	0.7500
3/4-16	UNF	0.0015	0.6820	0.6960	0.7094	0.7159	0.0065	0.7500
7/8-9	UNC	0.0019	0.7550	0.7780	0.8028	0.8110	0.0082	0.8750
7/8-14	UNF	0.0016	0.7980	0.8140	0.8286	0.8356	0.0070	0.8750
1-8	UNC	0.0020	0.8650	0.8900	0.9188	0.9276	0.0088	1.0000
1-12	UNF	0.0018	0.9100	0.9280	0.9459	0.9535	0.0076	1.0000
1-14	UNS	0.0017	0.9230	0.9380	0.9536	0.9609	0.0073	1.0000



# NUTS

## INTERNAL THREADS – CLASS 2B

Nominal Size & Threads / Inch & Series Designation		Allowance	Minor Diameter		Pitch Diameter			Major Diameter
			Min.	Max.	Min.	Max.	Tolerance	Min.
1 1/8-7	UNC	0.0022	0.9700	0.9980	1.3220	1.0416	0.0094	1.1250
1 1/8-8	UN	0.0021	0.9900	1.0150	1.0438	0.0528	0.0090	1.1250
1 1/8-12	UNF	0.0018	1.0350	1.0530	1.0709	1.0787	0.0078	1.1250
1 1/4-7	UNC	0.0220	1.0950	1.1230	1.1572	1.6680	0.0096	1.2500
1 1/4-8	UN	0.0021	1.1150	1.1400	1.1688	1.1780	0.0092	1.2500
1 1/4-12	UNF	0.0018	1.1600	1.1780	1.1959	1.2039	0.0080	1.2500
1 3/8-6	UNC	0.0024	1.1950	1.2250	1.2667	1.2771	0.0104	1.3750
1 3/8-8	UN	0.0022	1.2400	1.2650	1.2938	1.3031	0.0093	1.3750
1 3/8-12	UNF	0.0019	1.2850	1.3030	1.3209	1.3291	0.0082	1.3750
1 1/2-6	UNC	0.0024	1.3200	1.3500	1.3917	1.4022	0.0105	1.5000
1 1/2-8	UN	0.0022	1.3650	1.3900	1.4188	1.4283	0.0095	1.5000
1 1/2-12	UNC	0.0019	1.4100	1.4280	1.4459	1.4542	0.0083	1.5000
1 5/8-8	UN	0.0022	1.4900	1.5150	1.5438	1.5535	0.0097	1.6250
1 3/4-5	UNC	0.0027	1.5340	1.5680	1.6201	1.6317	0.0116	1.7500
1 3/4-8	UN	0.0023	1.6150	1.6400	1.6688	1.6786	0.0098	1.7500
1 7/8-8	UN	0.0023	1.7400	1.7650	1.7938	1.8038	0.0100	1.8750
2-4 1/2	UNC	0.0029	1.7590	1.7950	1.8557	1.8681	0.0124	2.0000
2-8	UN	0.0023	1.8650	1.8900	1.9188	1.9289	0.0101	2.0000
2 1/4-4.5	UNC	0.0029	2.0090	2.0450	2.1057	2.1183	0.0126	2.2500
2 1/4-8	UN	0.0024	2.1150	2.1400	2.1688	2.1792	0.0104	2.2500



# NUTS

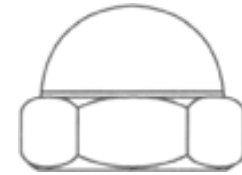
## INTERNAL THREADS – CLASS 2B

Nominal Size & Threads / Inch & Series Designation		Allowance	Minor Diameter		Pitch Diameter			Major Diameter
			Min.	Max.	Min.	Max.	Tolerance	Min.
2 1/2-4	UNC	0.0031	2.2290	2.2670	2.3376	2.3511	0.0135	2.5000
2 1/2-8	UN	0.0024	2.3650	2.3900	2.4188	2.4294	0.0106	2.5000
2 3/4-4	UNC	0.0032	2.4790	2.5170	2.5876	2.6013	0.0137	2.7500
2 3/4-8	UN	0.0025	2.6150	2.6400	2.6688	2.6796	0.0108	2.7500
3-4	UNC	0.0032	2.7290	2.7670	2.8376	2.8515	0.0139	3.0000
3-8	UN	0.0026	2.8650	2.8900	2.9188	2.9299	0.0111	3.0000
3 1/4-4	UNC	0.0033	2.9790	3.0170	3.0876	3.1017	0.0141	3.2500
3 1/4-8	UN	0.0026	3.1150	3.1400	3.1688	3.1801	0.0113	3.2500
3 1/2-4	UNC	0.0033	3.2290	3.2670	3.3376	3.3519	0.0143	3.5000
3 1/2-8	UN	0.0026	3.3650	3.3900	3.4188	3.4303	0.0115	3.5000
3 3/4-4	UNC	0.0034	3.4790	3.5170	3.5876	3.6021	0.0145	3.7500
3 3/4-8	UN	0.0027	3.6150	3.6400	3.6688	3.6805	0.0117	3.7500
4-4	UNC	0.0034	3.7290	3.7670	3.8376	3.8523	0.0147	4.0000
4-8	UN	0.0027	3.8650	3.8900	3.9188	3.9307	0.0119	4.0000



# NUTS

## TWO PIECE HEX CAP NUTS



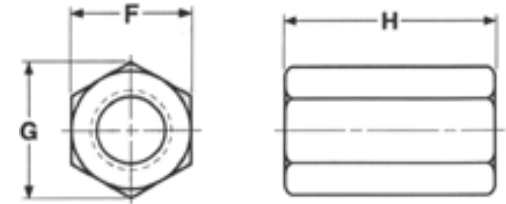
Size	Across the Flats	Overall Hght.
6-32	5/16	1/4
8-32	5/16	1/4
10-24	3/8	9/32
10-32	3/8	11/32
1/4-20	7/16	21/64
5/16-18	9/16	3/8
3/8-16	5/8	27/64
1/2-13	3/4	9/16
5/8-11	15/16	51/64



# NUTS

## HEX COUPLING NUTS

### Dimensions of Hex Coupling Nuts

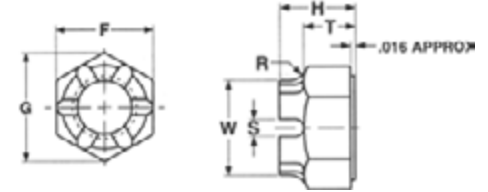


Nom Size or Basic Major Dia. of Thread		F			G		H		
		Width Across Flats			Width Across Corners		Length		
		Basic	Max	Min	Max	Min	Basic	Max	Min
1/4	0,250	3/8	0,375	0,365	0,433	0,416	3/4	0,76	0,74
5/16	0,313	1/2	0,500	0,489	0,577	0,557	15/16	0,95	0,93
3/8	0,375	9/16	0,562	0,551	0,650	0,628	1-1/8	1,13	1,11
1/2	0,500	3/4	0,750	0,736	0,866	0,839	1-1/2	1,51	1,49
5/8	0,625	15/16	0,938	0,922	1,083	1,051	1-7/8	1,89	1,86
3/4	0,750	1-1/8	1,125	1,088	1,299	1,240	2-1/4	2,27	2,22
1	1,000	1-1/2	1,500	1,450	1,732	1,653	3	3,03	2,97



# NUTS

## HEX CASTLE NUTS



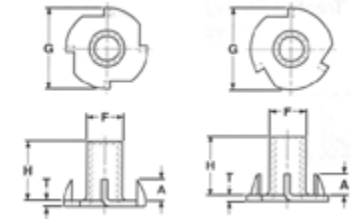
Nominal Size or Basic Major Dia. of Thread		F			G		H			T			S		R	W	Runout of Bearing Surface FIR
		Width Across Flats			Width Across Corners		Thickness			Unslotted Thickness and Height of Flat			Width of Slot		Radius of Fillet	Dia of Cylindrical	
		Basic	Max	Min	Max	Min	Basic	Max	Min	Nom	Max	Min	Max	Min	+ .010	Min	
5/8	0,625	15/16	0,938	0,922	1,083	1,051	23/32	0,731	0,706	1/2	0,51	0,49	0,24	0,18	0,156	0,797	0,021
3/4	0,750	1-1/8	1,125	1,088	1,299	1,240	13/16	0,827	0,798	9/16	0,57	0,55	0,24	0,18	0,188	0,941	0,023
7/8	0,875	1-5/16	1,312	1,269	1,516	1,447	29/32	0,922	0,890	21/32	0,67	0,64	0,24	0,18	0,188	1,097	0,025
1	1,000	1-1/2	1,500	1,450	1,732	1,653	1	1,018	0,982	23/32	0,73	0,7	0,3	0,24	0,188	1,254	0,027





# NUTS

## T- NUTS, STRAIGHT BARREL



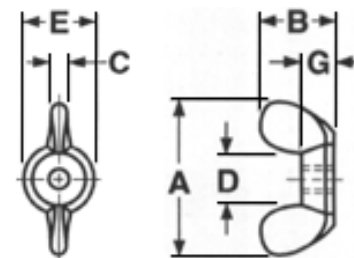
Thread Size	G	H	F	A	T	Drill Size	LBS Per M Pcs.
	Flange Dia.	Barrel Height	Barrel Diam.	Prong Height	Material Thickness		
10 - 24	3/4	5/16	0,243	7/32	0,040	1/4	7
10 - 24	3/4	5/16	0,243	7/32	0,040	1/4	7
10-32	3/4	5/16	0,243	7/32	0,040	1/4	7
10-32	3/4	5/16	0,243	7/32	0,040	1/4	7
1/4 - 20	3/4	5/16	0,305	7/32	0,047	5/16	9
1/4 - 20	3/4	5/16	0,305	7/32	0,047	5/16	9
1/4 - 20	3/4	7/16	0,305	5/16	0,047	5/16	9
1/4 - 20	3/4	7/16	0,305	1/4	0,047	5/16	9
5/16 - 18	7/8	3/8	0,390	1/4	0,063	25/64	14
5/16 - 18	7/8	3/8	0,390	1/4	0,063	25/64	14
5/16 - 18	7/8	5/8	0,390	5/16	0,063	25/64	18
3/8 - 16	1	7/16	0,440	11/32	0,063	29/64	19



# NUTS

## WING NUTS

### Cold Forged

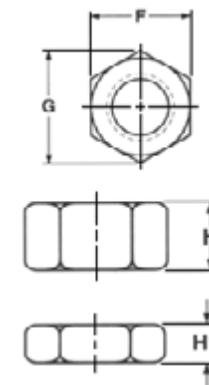


Nominal Size or Basic Major Diameter of Thread		Threads per Inch	A		B		C		D		E		F	
			Wing Spread		Wing Height		Wing Thickness		Between Wings		Boss Diameter		Boss Height	
			Max.	Min.	Max.	Min.	Max.	Min.	Max.	Min.	Max.	Min.	Max.	Min.
6	0,138	32	0,72	0,59	0,41	0,28	0,11	0,07	0,21	0,17	0,33	0,29	0,14	0,1
8	0,164	32	0,91	0,78	0,47	0,34	0,14	0,1	0,27	0,22	0,43	0,39	0,18	0,14
10	0,190	24 & 32	0,91	0,78	0,47	0,34	0,14	0,1	0,27	0,22	0,45	0,39	0,18	0,14
1/4	0,250	20	1,1	0,97	0,57	0,43	0,18	0,14	0,39	0,26	0,5	0,45	0,22	0,17
5/16	0,313	18	1,25	1,12	0,66	0,53	0,21	0,17	0,39	0,32	0,58	0,51	0,25	0,2
3/8	0,375	16	1,44	1,31	0,79	0,65	0,24	0,2	0,48	0,42	0,7	0,64	0,3	0,26
1/2	0,500	13	1,94	1,81	1	0,87	0,33	0,26	0,65	0,54	0,93	0,86	0,39	0,35
5/8	0,625	11	2,76	2,62	1,44	1,31	0,4	0,34	0,9	0,8	1,19	1,13	0,55	0,51
3/4	0,750	10	2,76	2,62	1,44	1,31	0,4	0,34	0,9	0,8	1,19	1,13	0,55	0,51



# NUTS

FINISHED HEX NUTS,  
HEX JAM AND TWO WAY REVERSIBLE LOCK NUTS

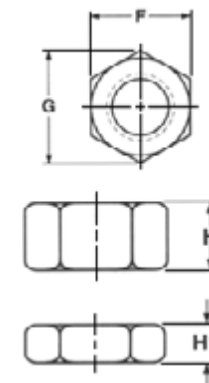


Nominal Or Basic Major Dia of Thread		F			G		H			H1		
		Width Across Flats			Width Across Comers		Thickness Hex Nuts & Reversible Lock Nuts			Thickness Hex Jam Nuts		
		Basic	Max	Min	Max	Min	Basic	Max	Mmin	Basic	Max	Min
8	0,164	11/32	0,344	0,332	0,397	0,378	—	0,203	0,187	—	—	—
10	0,190	3/8	0,375	0,362	0,433	0,413	—	0,203	0,187	—	—	—
1/4	0,250	7/16	0,438	0,428	0,505	0,488	7/32	0,226	0,212	5/32	0,164	0,150
5/16	0,313	1/2	0,500	0,489	0,577	0,557	17/64	0,273	0,258	3/16	0,195	0,180
3/8	0,375	9/16	0,562	0,551	0,650	0,628	21/64	0,337	0,320	7/32	0,227	0,210
7/16	0,438	11/16	0,688	0,675	0,794	0,768	3/8	0,385	0,365	1/4	0,260	0,240
1/2	0,500	3/4	0,750	0,736	0,866	0,840	7/16	0,448	0,427	5/16	0,323	0,302
9/16	0,563	7/8	0,875	0,861	1,010	0,982	31/64	0,496	0,473	5/16	0,324	0,301
5/8	0,625	15/16	0,938	0,922	1,083	1,051	35/64	0,559	0,535	3/8	0,387	0,363
3/4	0,750	1-1/8	1,125	1,088	1,299	1,240	41/64	0,665	0,617	27/64	0,446	0,398
7/8	0,875	1-5/16	1,312	1,269	1,516	1,447	3/4	0,776	0,724	31/64	0,510	0,458



# NUTS

FINISHED HEX NUTS,  
HEX JAM AND TWO WAY REVERSIBLE LOCK NUTS

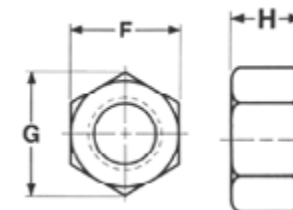


Nominal Or Basic Major Dia of Thread		F			G		H			H1		
		Width Across Flats			Width Across Comers		Thickness Hex Nuts & Reversible Lock Nuts			Thickness Hex Jam Nuts		
		Basic	Max	Min	Max	Min	Basic	Max	Mmin	Basic	Max	Min
1	1,000	1-1/2	1,500	1,450	1,732	1,653	55/64	0,887	0,831	35/64	0,575	0,519
1-1/8	1,125	1-11/16	1,688	1,631	1,949	1,859	31/32	0,999	0,939	39/64	0,639	0,579
1-1/4	1,250	1-7/8	1,875	1,812	2,165	2,066	1-1/6	1,094	1,030	23/32	0,751	0,687
1-3/8	1,375	2-1/16	2,062	1,994	2,382	2,273	1-11/64	1,206	1,138	25/32	0,815	0,747
1-1/2	1,500	2-1/4	2,250	2,175	2,598	2,480	1-9/32	1,317	1,245	27/32	0,880	0,808
1-5/8	1,625	2-7/16	2,438	2,356	2,815	2,686	1-25/64	1,429	1,353	29/32	0,945	0,869
1-3/4	1,750	2-5/8	2,625	2,538	3,031	2,893	1-1/2	1,540	1,460	31/32	1,009	0,929
2	2,000	3	3,000	2,900	3,464	3,306	1-23/32	1,763	1,675	1-3/32	1,138	1,050
2-1/4	2,250	3-3/8	3,375	3,263	3,897	3,719	1-15/16	1,986	1,890	1-7/32	1,267	1,171
2-1/2	2,500	3-3/4	3,750	3,625	4,330	4,133	2-5/32	2,209	2,105	1-11/32	1,396	1,292
2-3/4	2,750	4-1/8	4,125	3,988	4,763	4,546	2-3/8	2,431	2,319	1-15/32	1,525	1,413
3	3,000	4-1/2	4,500	4,350	5,196	4,959	2-19/32	2,654	2,534	1-19/32	1,654	1,534



# NUTS

## HEAVY HEX NUTS

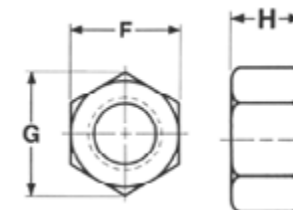


Nominal Size or Basic Major Dia. of Thread		F			G		H		
		Width Across Flats			Width Across Corners		Thickness Heavy Hex Nuts		
		Basic	Max.	Min.	Max.	Min.	Basic	Max.	Min.
1/4	0,250	1/2	0,500	0,488	0,577	0,556	15/64	0,250	0,218
5/16	0,313	9/16	0,562	0,546	0,650	0,622	19/64	0,314	0,280
3/8	0,375	11/16	0,688	0,669	0,794	0,763	23/64	0,377	0,341
7/16	0,438	3/4	0,750	0,728	0,866	0,830	27/64	0,441	0,403
1/2	0,500	7/8	0,875	0,850	1,010	0,969	31/64	0,504	0,464
9/16	0,563	15/16	0,938	0,909	1,083	1,037	35/64	0,568	0,526
5/8	0,625	1-1/16	1,062	1,031	1,227	1,175	39/64	0,631	0,587
3/4	0,750	1-1/4	1,250	1,212	1,443	1,382	47/64	0,758	0,710
7/8	0,875	1-7/16	1,438	1,394	1,660	1,589	55/64	0,885	0,833
1	1,000	1-5/8	1,625	1,575	1,876	1,796	63/64	1,012	0,956
1-1/8	1,125	1-13/16	1,812	1,756	2,093	2,002	1-7/64	1,139	1,079
1-1/4	1,250	2	2,000	1,938	2,309	2,209	1-7/32	1,251	1,187
1-3/8	1,375	2-3/16	2,188	2,119	2,526	2,416	1-11/32	1,378	1,310



# NUTS

## HEAVY HEX NUTS

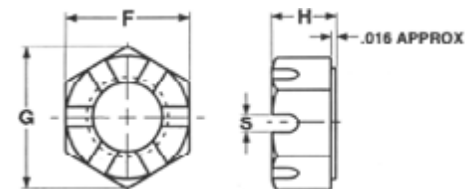


Nominal Size or Basic Major Dia. of Thread		F			G		H		
		Width Across Flats			Width Across Corners		Thickness Heavy Hex Nuts		
		Basic	Max.	Min.	Max.	Min.	Basic	Max.	Min.
1-1/2	1,500	2-3/8	2,375	2,300	2,742	2,622	1-15/32	1,505	1,433
1-5/8	1,625	2-9/16	2,562	2,481	2,959	2,828	1-19/32	1,632	1,556
1-3/4	1,750	2-3/4	2,750	2,662	3,175	3,035	1-23/32	1,759	1,679
1-7/8	1,875	2-15/16	2,938	2,844	3,392	3,242	1-27/32	1,886	1,802
2	2,000	3-1/8	3,125	3,025	3,608	3,449	1-31/32	2,013	1,925
2-1/4	2,250	3-1/2	3,500	3,388	4,041	3,862	2-13/64	2,251	2,155
2-1/2	2,500	3-7/8	3,875	3,750	4,474	4,275	2-29/64	2,505	2,401
2-3/4	2,750	4-1/4	4,250	4,112	4,907	4,688	2-45/64	2,759	2,647
3	3,000	4-5/8	4,625	4,475	5,340	5,102	2-61/64	3,013	2,893
3-1/4	3,250	5	5,000	4,838	5,774	5,515	3-3/16	3,252	3,124
3-1/2	3,500	5-3/8	5,375	5,200	6,207	5,928	3-7/16	3,506	3,370
3-3/4	3,750	5-3/4	5,750	5,562	6,640	6,341	3-11/16	3,760	3,616
4	4,000	6-1/8	6,125	5,925	7,073	6,755	3-15/16	4,014	3,862



# NUTS

## HEX SLOTTED NUTS

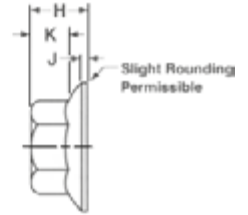
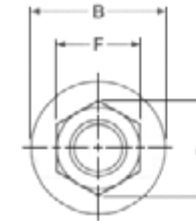


Normal Size or Basic Major Dia of Thread		F			G		H			T		S		Runout Of Bearing Surface FIM
		Width Across Flats			Width Across Corners		Thickness			Unslotted Thickness		Width of Slot		
		Basic	Max	Min	Max	Min	Basic	Max	Min	Max	Min	Max	Min	
3/8	0,375	9/16	0,562	0,551	0,650	0,628	21/64	0,337	0,320	0,21	0,19	0,15	0,12	0,018
7/16	0,438	11/16	0,688	0,675	0,794	0,768	3/8	0,385	0,365	0,23	0,21	0,15	0,12	0,018
1/2	0,500	3/4	0,750	0,736	0,866	0,840	7/16	0,448	0,427	0,29	0,27	0,18	0,15	0,019
5/8	0,625	15/16	0,938	0,922	1,083	1,051	35/64	0,559	0,535	0,34	0,32	0,24	0,18	0,021
3/4	0,750	1-1/8	1,125	1,088	1,299	1,240	41/64	0,665	0,617	0,40	0,38	0,24	0,18	0,023
7/8	0,875	1-5/16	1,312	1,269	1,516	1,447	3/4	0,776	0,724	0,52	0,49	0,24	0,18	0,025
1	1,000	1-1/2	1,500	1,450	1,732	1,653	55/64	0,887	0,831	0,59	0,56	0,30	0,24	0,027
1-1/8	1,125	1-11/16	1,688	1,631	1,949	1,859	31/32	0,999	0,939	0,64	0,61	0,33	0,24	0,030
1-1/4	1,250	1-7/8	1,875	1,812	2,165	2,066	1-1/16	1,094	1,030	0,70	0,67	0,40	0,31	0,033
1-1/2	1,500	2-1/4	2,250	2,175	2,598	2,480	1-9/32	1,317	1,245	0,86	0,82	0,46	0,37	0,039



# NUTS

## SERRATED FLANGE LOCK NUTS



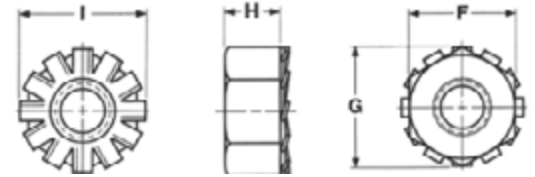
Nominal Size or Basic Major Diameter of Thread		F		G		B		H		K	J
		Width Across Flats		Width Across Corners		Flange Diameter		Nut Thickness		Wrenching Length	Flange Thickness
		Max.	Min.	Max.	Min.	Max.	Min.	Max.	Min.	Min.	Max.
6	0,138	0,312	0,302	0,361	0,342	0,422	0,406	0,171	0,156	0,10	0,02
8	0,164	0,344	0,334	0,397	0,381	0,469	0,452	0,203	0,187	0,13	0,02
10	0,190	0,375	0,365	0,433	0,416	0,500	0,480	0,219	0,203	0,13	0,03
12	0,216	0,438	0,428	0,505	0,488	0,594	0,574	0,236	0,222	0,14	0,04
1/4	0,250	0,438	0,428	0,505	0,488	0,594	0,574	0,236	0,222	0,14	0,04
5/16	0,313	0,500	0,489	0,577	0,557	0,680	0,660	0,283	0,268	0,17	0,04
3/8	0,375	0,562	0,551	0,650	0,628	0,750	0,728	0,347	0,330	0,23	0,04
7/16	0,438	0,688	0,675	0,794	0,768	0,937	0,910	0,395	0,375	0,26	0,04
1/2	0,500	0,750	0,736	0,866	0,840	1,031	1,000	0,458	0,437	0,31	0,05
5/8	0,625	0,938	0,922	1,083	1,051	1,281	1,248	0,569	0,545	0,40	0,05
3/4	0,750	1,125	1,088	1,299	1,240	1,500	1,460	0,675	0,627	0,46	0,06





# NUTS

## "K" LOCK NUTS

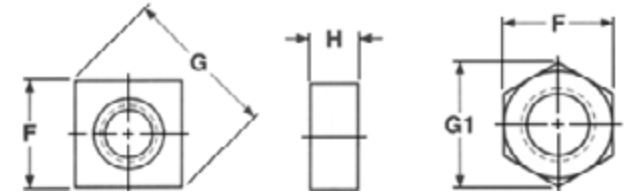


Nominal Size or Basic Thread Diameter		F			G		H		I
		Width Across Flats			Width Across Corners		Thickness		Washer Diameter
					Hex				
		Basic	Max.	Min.	Max.	Min.	Max.	Min.	Ref.
4	0,112	1/4	0,250	0,241	0,289	0,275	0,098	0,087	0,281
6	0,138	5/16	0,312	0,302	0,361	0,344	0,114	0,102	0,344
8	0,164	11/32	0,344	0,332	0,397	0,378	0,130	0,117	0,375
10	0,190	3/8	0,375	0,362	0,433	0,413	0,130	0,117	0,406
1/4	0,250	7/16	0,438	0,423	0,505	0,482	0,193	0,178	0,500
5/16	0,313	1/2	0,500	0,489	0,577	0,557	0,273	0,258	0,578
3/8	0,375	9/16	0,562	0,551	0,650	0,628	0,385	0,365	0,656



# NUTS

## SQUARE AND HEX MACHINE SCREW NUTS

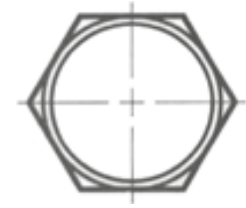


Nominal Size or Basic Thread Diameter		F			G		G1		H	
		Width Across Flats			Width Across Corners				Thickness	
					Square		Hex			
		Basic	Max.	Min.	Max.	Min.	Max.	Min.	Max.	Min.
2	0,086	3/16	0,188	0,180	0,265	0,247	0,217	0,205	0,066	0,057
3	0,099	3/16	0,188	0,180	0,265	0,247	0,217	0,205	0,066	0,057
4	0,112	1/4	0,250	0,241	0,354	0,331	0,289	0,275	0,098	0,087
5	0,125	5/16	0,312	0,302	0,442	0,415	0,361	0,344	0,114	0,102
6	0,138	5/16	0,312	0,302	0,442	0,415	0,361	0,344	0,114	0,102
8	0,164	11/32	0,344	0,332	0,486	0,456	0,397	0,378	0,130	0,117
10	0,190	3/8	0,375	0,362	0,530	0,497	0,433	0,413	0,130	0,117
12	0,216	7/16	0,438	0,423	0,619	0,581	0,505	0,482	0,161	0,148
1/4	0,250	7/16	0,438	0,423	0,619	0,581	0,505	0,482	0,193	0,178
5/16	0,313	9/16	0,562	0,545	0,795	0,748	0,650	0,621	0,225	0,208
3/8	0,375	5/8	0,625	0,607	0,884	0,833	0,722	0,692	0,257	0,239



# NUTS

## HEX PANEL NUTS

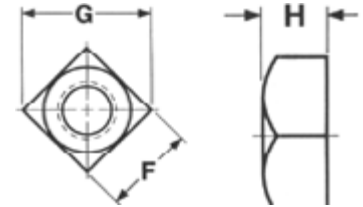


Size	Across the Flats	Thickness
1/8-27	9/16	1/8
1/8-27	9/16	3/16
3/8-32	1/2	3/32
3/8-32	9/16	3/32
15/32-32	9/16	3/32



# NUTS

## REGULAR SQUARE NUTS

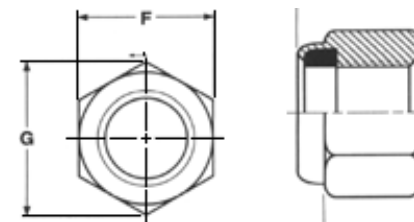


Nominal or Basic Major Dia. of Thread		F			G		H		
		Width Across Flats			Width Across Corners		Across Corners Thickness		
		Basic	Max.	Mm.	Max.	Mm.	Basic	Max.	Mm.
1/4	0,250	7/16	0,438	0,425	0,619	0,584	7/32	0,235	0,203
5/16	0,313	9/16	0,562	0,547	0,795	0,751	17/64	0,283	0,249
3/8	0,375	5/8	0,625	0,606	0,884	0,832	21/64	0,346	0,310
7/16	0,438	3/4	0,750	0,728	1,061	1,000	3/8	0,394	0,356
1/2	0,500	13/16	0,812	0,788	1,149	1,082	7/16	0,458	0,418
5/8	0,625	1	1,000	0,969	1,414	1,330	35/64	0,569	0,525
3/4	0,750	1-1/8	1,125	1,088	1,591	1,494	21/32	0,680	0,632
7/8	0,875	1-5/16	1,312	1,269	1,856	1,742	49/64	0,792	0,740
1	1,000	1-1/2	1,500	1,450	2,121	1,991	7/8	0,903	0,847
1-1/4	1,250	1-7/8	1,875	1,812	2,652	2,458	1-3/32	1,126	1,062
1-1/2	1,500	2-1/4	2,250	2,175	3,182	2,956	1-5/16	1,348	1,276



# NUTS

## NYLON INSERT STOP NUTS



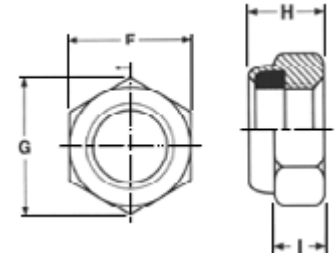
Nominal Size or Basic Thread Diameter		F			H		I	G
		Width Across Flats			Thickness		Side Height	Width Across Comers
		Basic	Max.	Min.	Max.	Min.	Ref.	Ref.
4	0,112	1/4	0,251	0,241	0,153	0,133	0,081	0,268
6	0,138	5/16	0,313	0,302	0,188	0,168	0,103	0,399
8	0,164	11/32	0,345	0,332	0,239	0,219	0,140	0,374
10	0,190	3/8	0,376	0,362	0,249	0,229	0,140	0,410
1/4	0,250	7/16	0,439	0,428	0,328	0,298	0,225	0,482
5/16	0,313	1/2	0,502	0,489	0,359	0,329	0,250	0,552
3/8	0,375	9/16	0,565	0,551	0,468	0,438	0,335	0,622
7/16	0,438	11/16	0,690	0,675	0,468	0,438	0,324	0,698
1/2	0,500	3/4	0,752	0,736	0,609	0,579	0,464	0,837
9/16	0,563	7/8	0,877	0,861	0,656	0,626	0,469	0,978
5/8	0,625	15/16	0,940	0,922	0,765	0,735	0,593	1,051
3/4	0,750	1-1/8	1,127	1,088	0,890	0,860	0,742	1,191
7/8	0,875	1-5/16	1,315	1,269	0,999	0,969	0,790	1,430
1	1,000	1-1/2	1,502	1,450	1,078	1,061	0,825	1,615
1-1/8	1,125	1-11/16	1,690	1,631	1,203	1,141	0,930	1,826
1-1/4	1,250	1-7/8	1,877	1,812	1,422	1,360	1,125	2,038
1-1/2	1,500	2-1/4	2,252	2,175	1,640	1,578	1,313	2,444



# NUTS

## NYLON INSERT STOP NUTS

### Thin Pattern



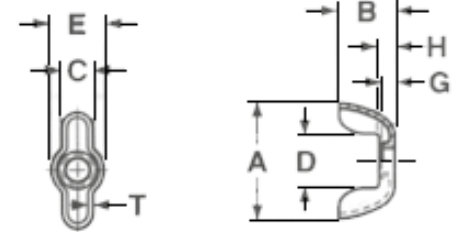
Nominal Size or Basic Thread Diameter		F			H		I	G
		Width Across Flats			Thickness		Side Height	Width Across Corners
		Basic	Max.	Min.	Max.	Min.	Ref.	Ref.
4	0,112	1/4	0,251	0,241	0,124	0,094	0,075	0,268
6	0,138	5/16	0,313	0,302	0,140	0,110	0,090	0,399
8	0,164	11/32	0,345	0,332	0,187	0,157	0,110	0,374
10	0,190	3/8	0,376	0,362	0,187	0,157	0,110	0,410
1/4	0,250	7/16	0,439	0,428	0,218	0,188	0,125	0,482
5/16	0,313	1/2	0,502	0,489	0,265	0,235	0,158	0,552
3/8	0,375	9/16	0,565	0,551	0,281	0,251	0,150	0,622
7/16	0,438	11/16	0,690	0,675	0,328	0,298	0,190	0,694
1/2	0,500	3/4	0,752	0,736	0,328	0,298	0,225	0,837
5/8	0,625	15/16	0,940	0,922	0,406	0,376	0,264	1,051
3/4	0,750	1-1/8	1,127	1,088	0,421	0,391	0,288	1,191



# NUTS

## WING NUTS

### Stamped



Nominal Size or Basic Major Diameter of Thread		Threads per Inch	A		B		C		D	E		G	H	T	
			Wing Spread		Wing Height		Wing Thickness		Between Wings	Boss Diameter		Boss Height	Wall Height	Stock Thickness	
			Max.	Min.	Max.	Min.	Max.	Min.	Min.	Max.	Min.	Min.	Min.	Max.	Min.
6	0,138	32	0,78	0,72	0,40	0,34	0,18	0,14	0,25	0,41	0,35	0,08	0,12	0,04	0,03
8	0,164	32	0,78	0,72	0,40	0,34	0,18	0,14	0,25	0,41	0,35	0,08	0,12	0,04	0,03
10	0,190	24 & 32	0,91	0,85	0,47	0,41	0,21	0,17	0,34	0,53	0,47	0,10	0,12	0,04	0,03
1/4	0,250	20	1,11	1,05	0,50	0,44	0,25	0,21	0,34	0,62	0,56	0,11	0,12	0,05	0,04
5/16	0,313	18 & 24	1,30	1,24	0,59	0,53	0,30	0,26	0,46	0,73	0,67	0,14	0,18	0,06	0,05
3/8	0,375	16 & 24	1,41	1,34	0,67	0,61	0,34	0,30	0,69	0,83	0,77	0,16	0,18	0,06	0,05

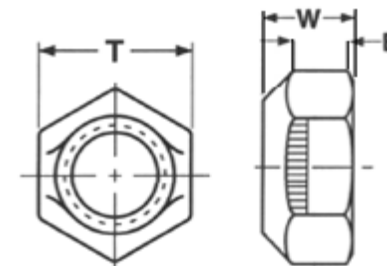


# NUTS

STOVER® LOCKNUTS

Grade C

Automation Style



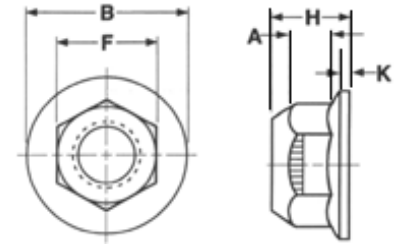
Nom. Size In Inches	T			W		B
	Width Across Flats			Overall Thickness		Hex Height
	Nom.	Max.	Min.	Max.	Min.	(Min.)
1/4	7/16	0,439	0,428	0,226	0,212	0,145
5/16	1/2	0,502	0,489	0,273	0,258	0,166
3/8	9/16	0,565	0,551	0,337	0,320	0,198
7/16	11/16	0,690	0,675	0,385	0,365	0,223
1/2	3/4	0,752	0,736	0,448	0,427	0,262
9/16	7/8	0,877	0,861	0,496	0,473	0,286
5/8	15/16	0,940	0,922	0,559	0,535	0,329
3/4	1-1/8	1,127	1,088	0,665	0,617	0,382
7/8	1-5/16	1,315	1,269	0,776	0,724	0,450
1	1-1/2	1,502	1,450	0,887	0,831	0,513





# NUTS

## GRADE GT FLANGE STYLE

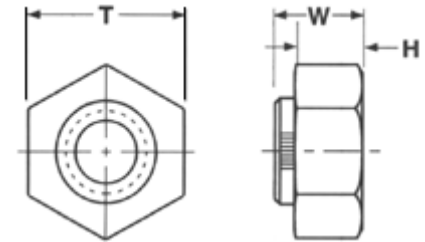


Nom. Size In Inches	F			B	H		A	K
	Width Across Flats			Flange Diam. (Max.)	Overall Thickness		Hex Height (Min.)	Flange Thick. (Min.)
	Nom.	Max.	Min.	(Max.)	Max.	Min.	(Min.)	(Min.)
3/8	9/16	0,565	0,551	0,810	0,425	0,404	0,200	0,060
1/2	3/4	0,752	0,736	1,070	0,555	0,528	0,260	0,080
5/8	15/16	0,940	0,922	1,330	0,690	0,646	0,320	0,100
3/4	1-1/8	1,127	1,088	1,585	0,825	0,742	0,380	0,110



# NUTS

## STOVER® LOCKNUTS Grade C Hex Collar



Nom. Size In Inches	T		W		H	
	Width Across Flats		Overall Thickness		Hex Height	
	Max.	Min.	Max.	Min.	Max.	Min.
1-1/8	1,688	1,631	0,999	0,939	0,657	0,636
1-1/4	1,875	1,812	1,094	1,030	0,719	0,698
1-3/8	2,062	1,994	1,206	1,138	0,793	0,771
1-1/2	2,250	2,175	1,317	1,245	0,865	0,843
1-3/4	2,625	2,538	1,540	1,460	1,012	0,989
2	3,000	2,900	1,763	1,675	1,158	1,134